



NUCLEAR WASTE
MANAGEMENT
ORGANIZATION

SOCIÉTÉ DE GESTION
DES DÉCHETS
NUCLÉAIRES

Regional Services Emergency Services, Vulnerable Populations and Social Programs, and Regional Economic Development

November 3, 2022

Hosted by

Dave Rushton, *Project Manager* (Municipality of South Bruce)

Allan Webster, *Vice President, Regulatory Approvals* (NWMO)

Agenda

1. Regional Economic Development

2. Emergency Services

3. Vulnerable Populations and Social Programs

Regional Economic Development Study Report

1

Study Lead:

Andrew Keir, Keir Corp.

Vicki McCullough, DPRA Canada Inc.

Peer Review:

Greg Ferraro, GHD

Paul Blais, Deloitte

In this section ...

- Economic Contributions of the Study Areas
- Capacity to Contribute to the Project
- Desired Outcomes and Potential Opportunities
- Economic Development Collaborative

Study Objectives

The overall objective of the study is to identify the economic development opportunities for the municipalities that are within the region of economic benefit of the Project.

Define the area that reflects the regional economy

Describe the major contributors to the regional economy

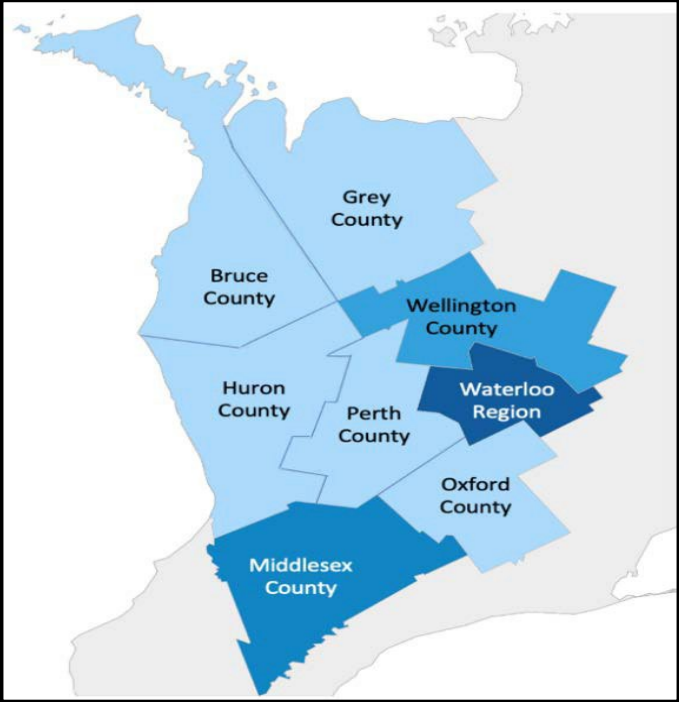
Describe the industrial and commercial opportunities

Identify regional employers that could provide services

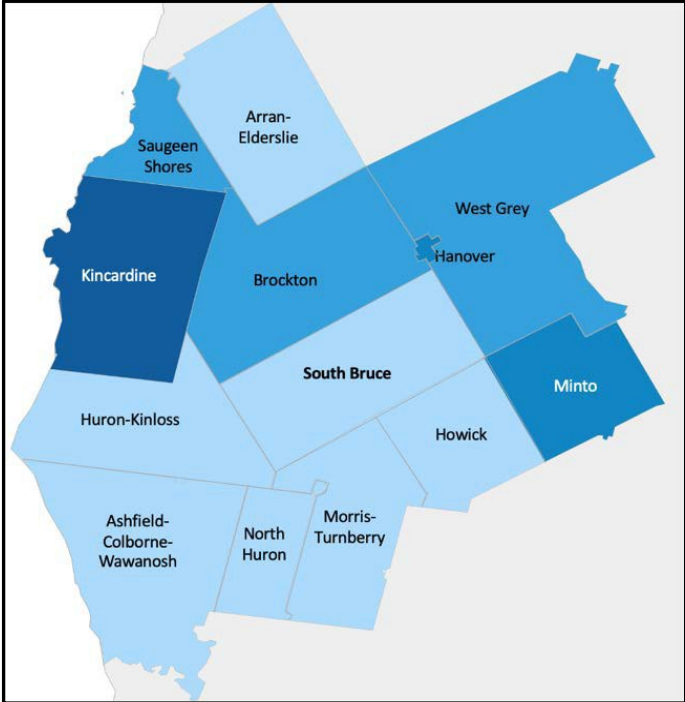
Identify regionally based businesses that could supply equipment and material

Identify opportunities with major contributors to the regional economy

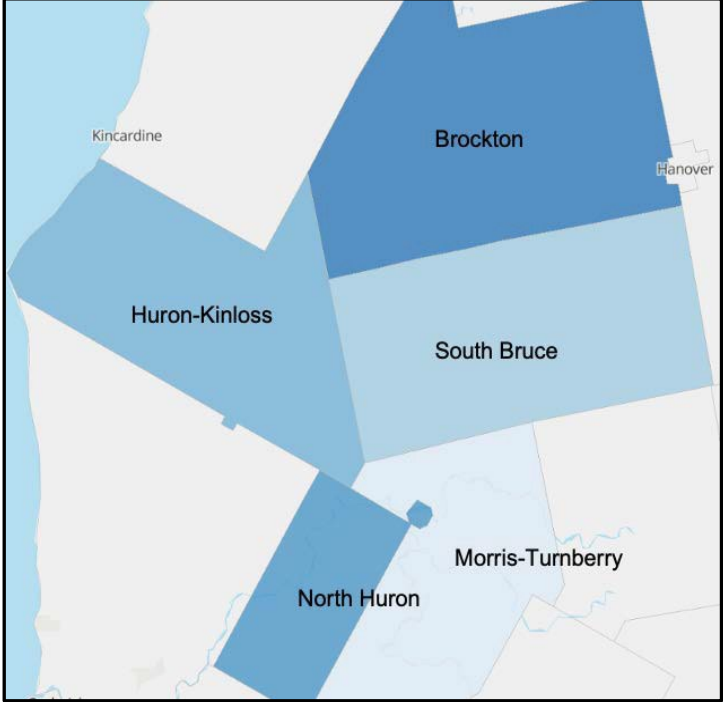
Study Areas



Regional Study Area (RSA)



Local Study Area (LSA)

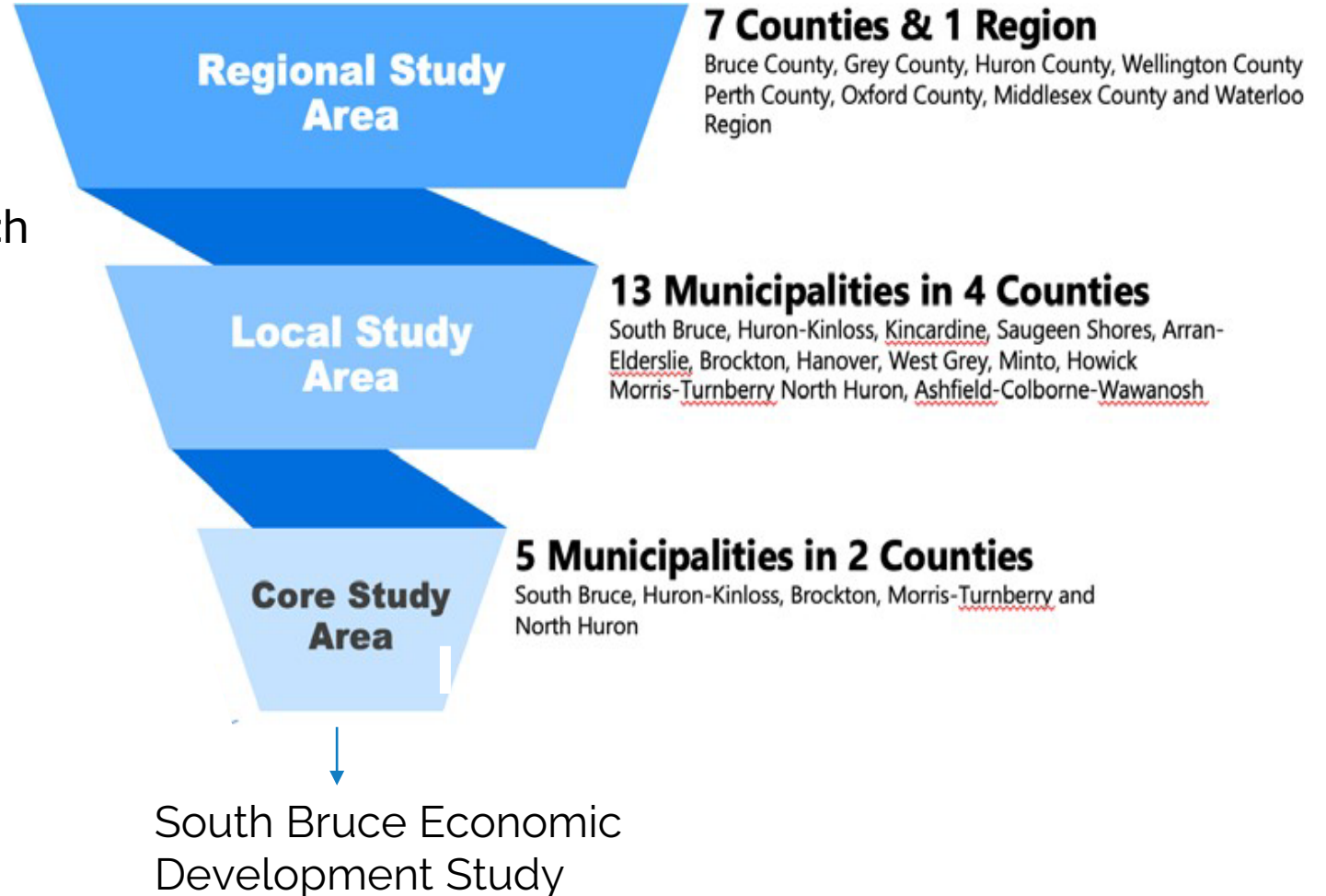


Core Study Area (CSA)

Study Areas

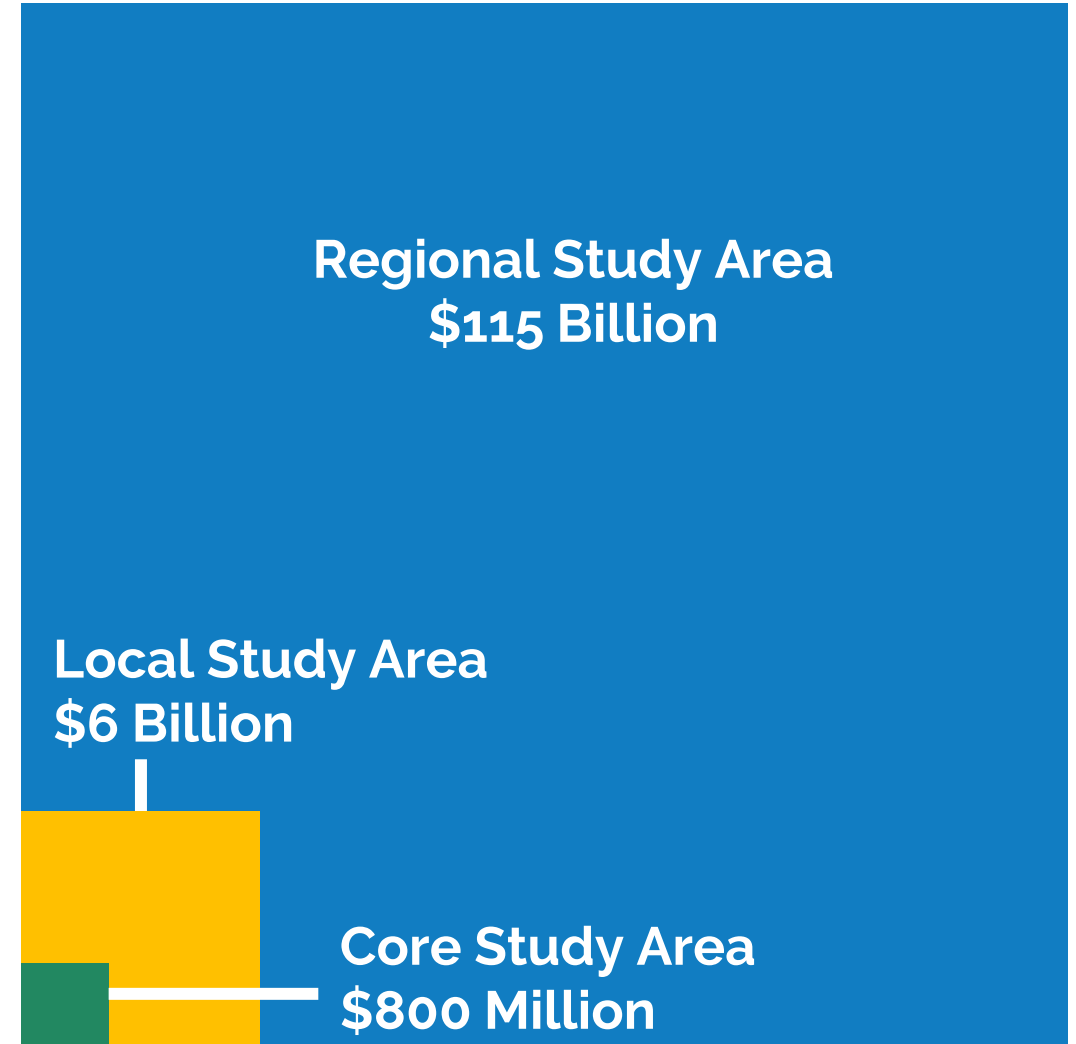
The Study considers:

- Availability of labour, number and concentration of companies within each sector, and their purchasing patterns.
- Each area's capacity to support the needs of the Project and opportunities for the Core Study Area to optimize benefits.



Economic Contribution

- Wellington, Middlesex, Oxford, and Waterloo have highly diversified economies, a large pool of skilled knowledge workers, and a concentration of advanced industries.
- The Local and Core Study Areas provide a small contribution to the overall regional economy.



Capacity to Contribute to Project

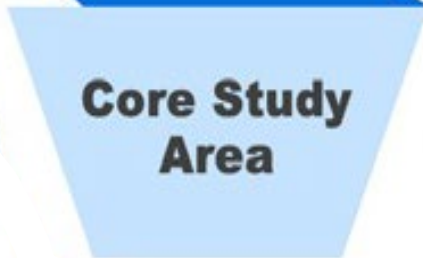


Considerable nuclear and non-nuclear capability for design, contractor services and equipment supply

Limited mining services capability

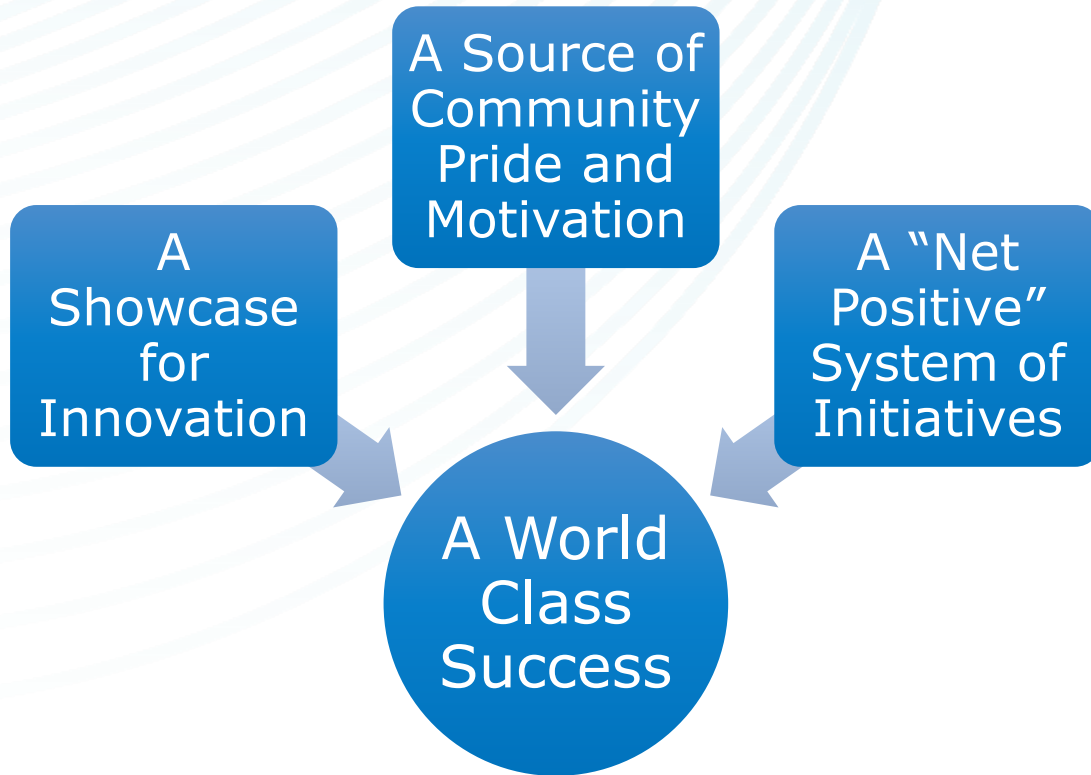


Medium strength across all sectors



Little capacity to contribute to nuclear construction
Limited capacity for design services and equipment supply

Desired Outcomes



Showcase for Innovation

Highlight the rare opportunities and innovations enabled by the Project.

A Source of Community Pride and Motivation

It is important that people feel they have contributed to initiatives that make a positive difference – both local and regional.

A Net Positive System of Initiatives

Community should be better off because of the Regional economic development initiatives enabled the Project.

A World Class Success

The Project is a world class project - the opportunities that it can generate should seek to make the world a better place. The Regional economic development strategy should cast itself in the same light.

Potential Opportunities

A number of potential opportunities for economic development can be explored further. Core Study Area Municipalities should collaborate rather than compete for these opportunities.

Training & Recruiting



- Ontario Youth Apprenticeship Program
- NWMO Staffing
- Workforce Development
- Training and Conference Facility

Supply Chain



- Building, Grounds, Equipment Maintenance
- Used Fuel Container Manufacturing
- Food Services
- Supply Chain Investment

Resource Use



- Aggregate Supply
- Excavated Rock Management Area
- Food Supply
- On Site Agriculture or Wildling
- Agri-tech

Community Incentives

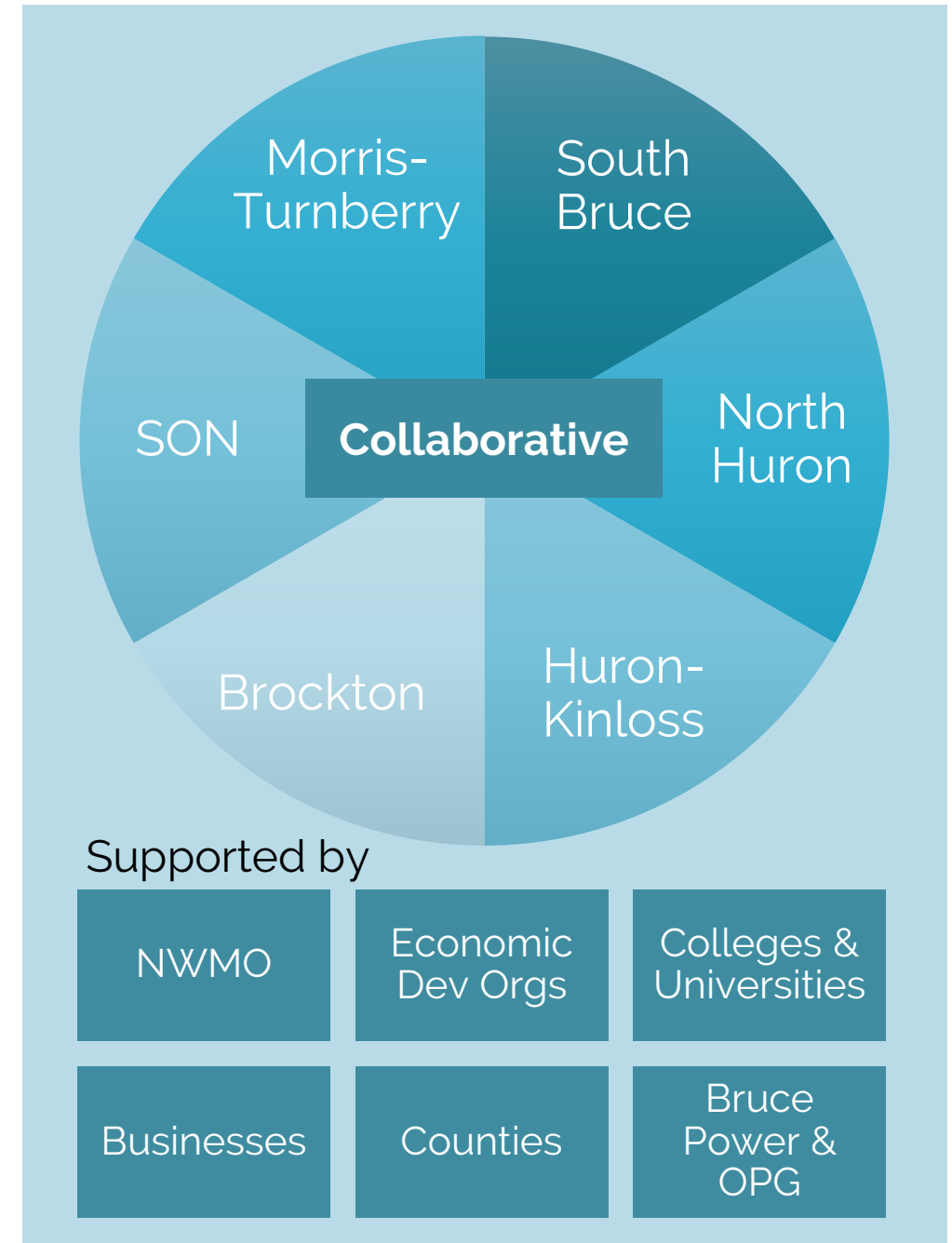


- Project Awareness
- Regional Trails
- Child Care
- Seniors Housing

Economic Development Collaborative

The Study recommends establishing a Core Study Area Economic Development Collaborative to:

- Develop economic and workforce development initiatives
- Allow municipalities to be more competitive within the Regional Study Area
- Focus on Project-related opportunities and also spin-off opportunities
- Integrate connected initiatives, such as (workforce development, housing and infrastructure)
- Build relationships with supportive organizations, agencies, etc.



Technical Peer Review

- The Regional Economic Development Study identifies significant opportunity for the Core Study Area to realize the Project-associated economic benefit.
- Establishing the Collaborative is intended to enable Core Study Area municipalities to realize the Project-associated economic benefits.
- Recommended for South Bruce to identify and communicate the opportunity to the Core Study Area municipalities.
- Follow up studies should
 - Be more specific on impacts for businesses who want to relocate to or expand in the area
 - Articulate the economic development aspirations and mechanisms available to shape economic development.
 - Describe the capacity, capabilities, and value proposition of the Collaborative
 - Explore the risks of the Collaborative and the risks of not forming the Collaborative

Emergency Services Study Report

Study Leads:

Dr Don Gorber and Dr Mehran
Monabbati, Independent Environmental
Consultants

Vicky McCulloch, DPRA Canada Inc.

Peer Review:

Laura Boksman RSIC

Mark Jasper, GHD

2

In this section ...

- How Emergency Response is Regulated
- Emergency Planning Zone
- Study Recommendations

Study Objectives

Objective 1

- Identify changes that may be required to the Bruce County Emergency Response Plan, including nuclear emergency response capability for the operations phase of the Project.

Objective 2

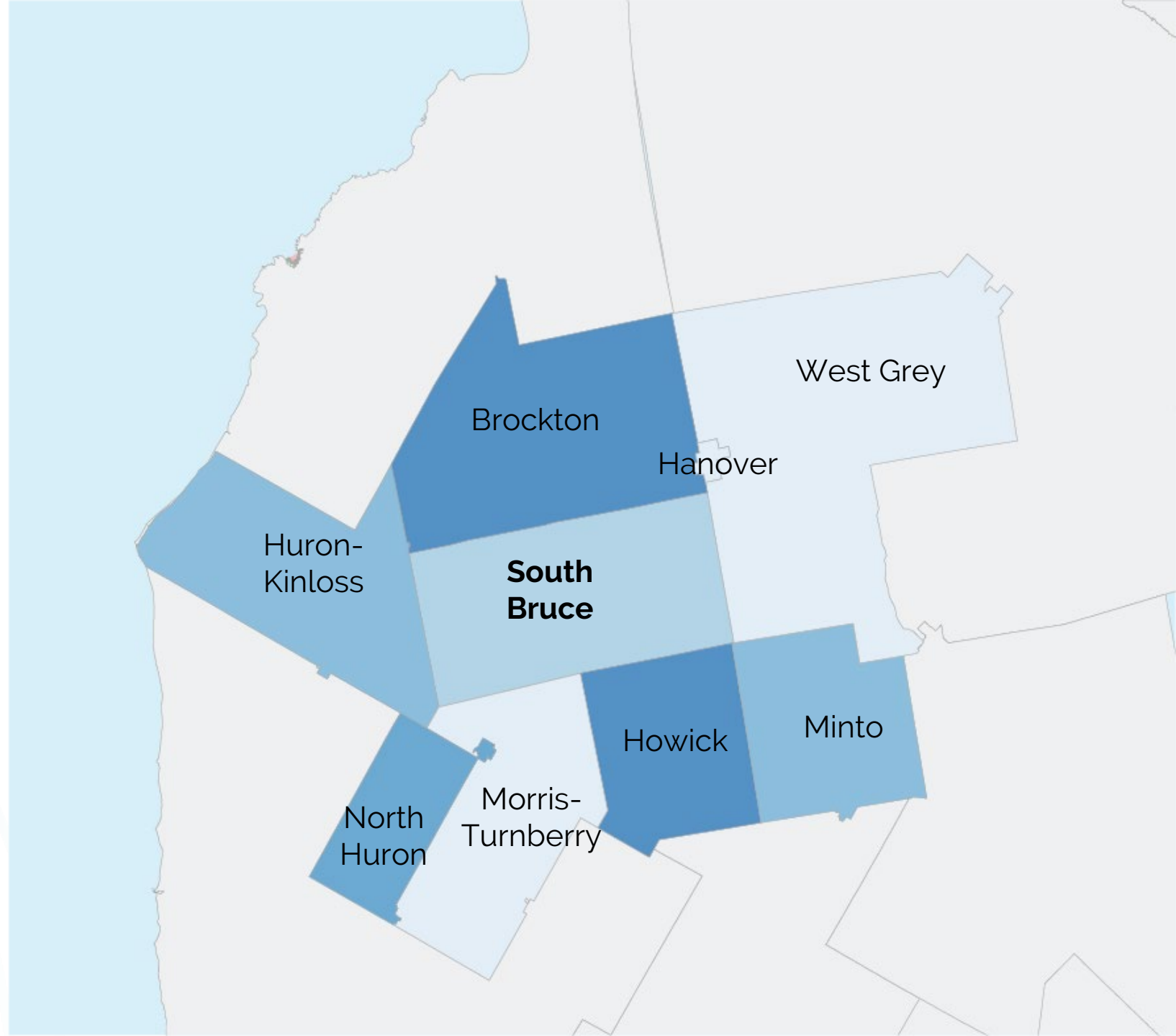
- Identify changes to fire and injury response capability that may be needed from Bruce County and the Municipality of South Bruce during the construction phase of the Project.

Objective 3

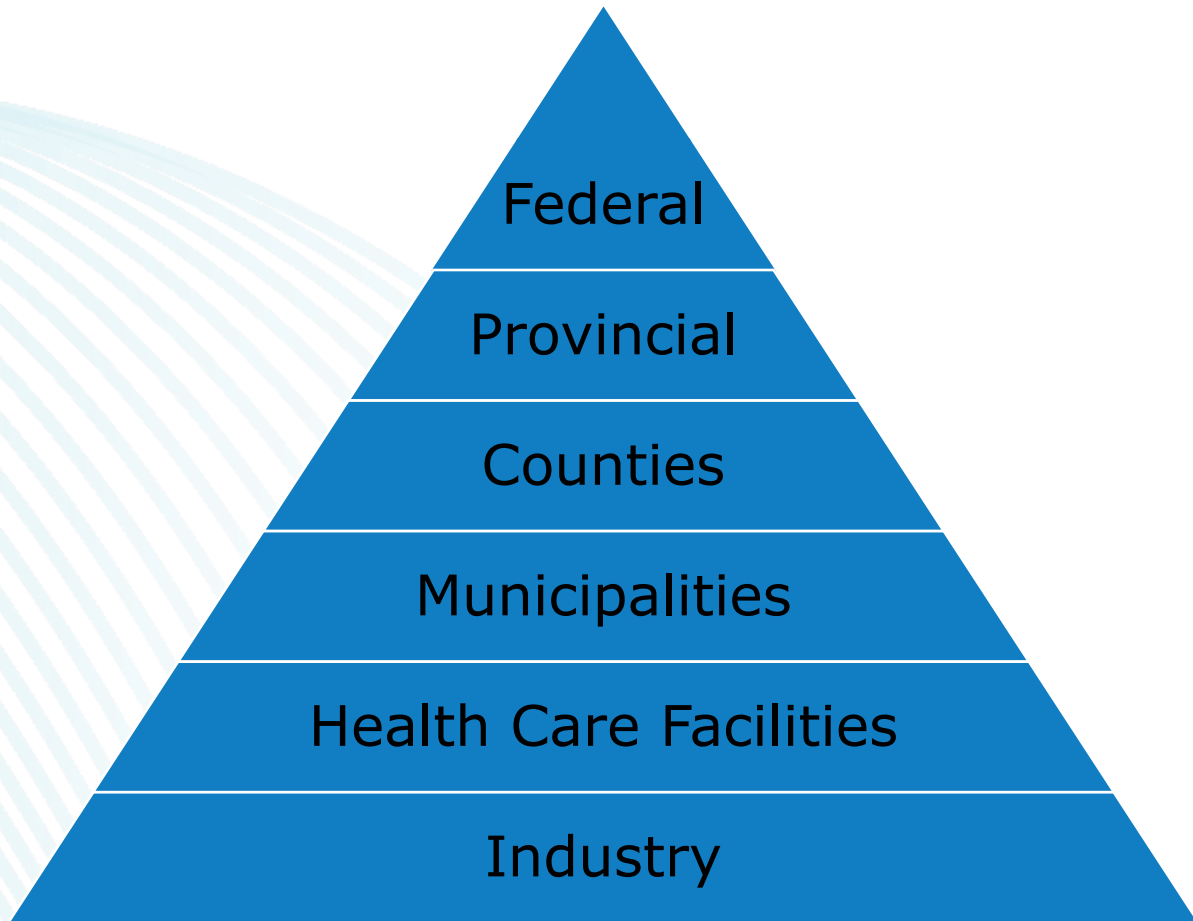
- Identify the parties in the region that could participate in a Mine Safety and Rescue Emergency Services plan.

Study Area

- **Bruce County:**
 - The Municipality of South Bruce
 - Township of Huron-Kinloss
 - Municipality of Brockton
- **Huron County:**
 - Municipality of Morris-Turnberry
 - Township of North Huron
 - Township of Howick
- **Grey County:**
 - Municipality of West Grey
 - Town of Hanover
- **Wellington County:**
 - Town of Minto



Framework for Emergency Response in Ontario



The federal and provincial government support emergency response services provided by counties, municipalities, health care facilities and industry.



Federal Regulators



The Canadian Nuclear Safety Commission (CNSC), Transport Canada and provincial regulators regulate the **development and operation of nuclear facilities** and **transport of used nuclear fuel**



Transport
Canada

Transports
Canada

- Emergency response requirements are designed to minimize any potential harm and effects on nearby people and the environment.
- CNSC site-specific emergency response requirements would occur following site selection during the regulatory activities in the pre-construction phase.

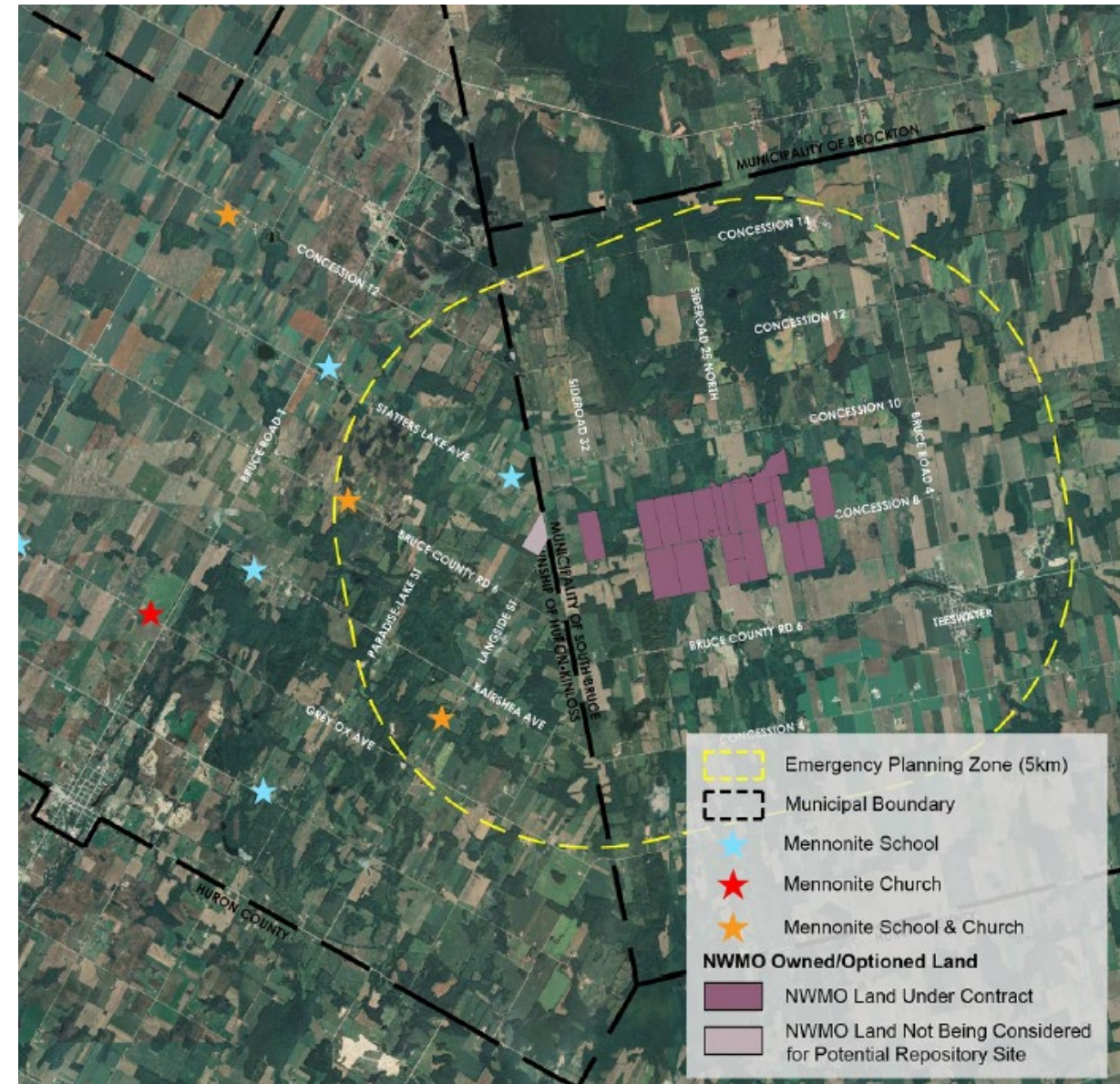


New Canadian Standards Association standard for deep geological disposal of radioactive waste will be reviewed for implications to emergency planning (CSA N292.7).

Emergency Planning Zone

Federal and Provincial Regulators will establish an Emergency Planning Zone based on incident scenarios during the Impact Assessment.

The Emergency Services Study used a conservative 5 km zone, provided by the NWMO, for planning purposes.



Study Conclusions

- Mutual Aid Agreements and Memorandums of Understanding will allow municipalities, health care facilities and industry to support each others' emergency response services.
- There is a great deal of knowledge in the area due to presence of Bruce Power, Compass Minerals' Goderich Salt Mine and Kinectrics Laundry Facility in Teeswater.
- Additional studies needed during pre-construction phase when Project details are available to identify and plan for potential emergencies.
- Counties and municipalities will need to update their Emergency Response Plans.



Kinectrics Laundry Facility (Saugeen Times)

Study Conclusions

- Study Area Municipalities will need additional emergency response capacity to handle Project and non-Project related emergencies.
- NWMO, federal and provincial agencies and municipalities will need to plan for unique evacuation needs within the Emergency Planning Zone such as health care facilities, schools, senior residences, daycares, and the Mennonite community.



South Bruce Fire Rescue Service (Blackburn News)

Technical Peer review

- Insufficient information at this stage to fully detail the Project's effects on local emergency services.
- All the required emergency service capabilities and capacity do not currently exist in the local study area to support the Project.
- Further studies should look at existing emergency service frameworks of facilities beyond the local study area including
 - Chalk River
 - Canadian nuclear power plants such as Darlington, Point Lepreau, etc.
 - International nuclear and radiological facilities
 - International underground repositories

Further studies required to define the needs; the Project supplied emergency services; the required expansion of public supplied services; and the funding instruments needed for each emergency service to functionally support the Project.

Vulnerable Populations and Social Programs Studies

Study Lead:

Tracy Farmer, DPRA Canada Inc.

Samuel Hanig, DPRA Canada Inc.

Peer Review:

Brigitte Masella, GHD

Ian Dobrindt, GHD

In this section ...

- Who are vulnerable populations?
- How will the Project impact social programs and vulnerable populations?
- Options to enhance opportunities and mitigate potential negative effects

Objectives of the Vulnerable Populations Study

Objective 1

- Identify vulnerable populations (elderly, social assistance program recipients, etc.) within the Municipality of South Bruce and region.

Objective 2

- Identify the programs and other supports that is currently provided to vulnerable populations including subsidies for housing.

Objective 3

- Evaluate the potential effects of the Project on those programs and other supports needed by vulnerable populations.

Objective 4

- Identify options to mitigate the potential effects including the potential for those options to continue the current levels of support for vulnerable populations.

Objectives of the Social Programs Study

Objective 1

- Describe the current social programs and services available to residents of South Bruce.

Objective 2

- Identify potential increases in both funding and in demand for specific social services and programs as a result of the Project.

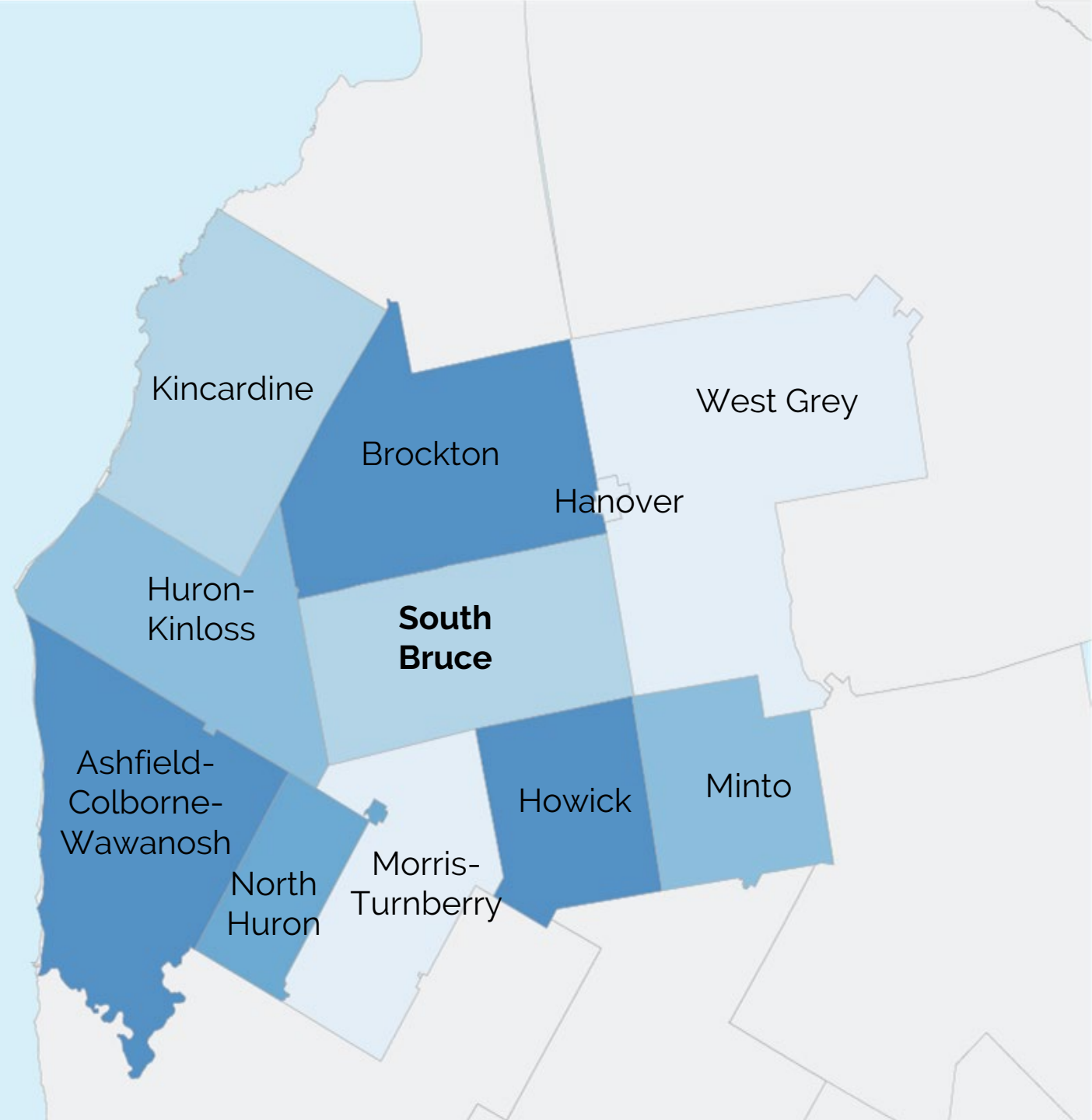
Objective 3

- Identify options to sustain social programs for the projected population with the Project.

Given the overlap of the subject matter, both studies were combined into one report

Study Area

- Bruce County:
 - Municipality of South Bruce
 - Township of Huron-Kinloss
 - Municipality of Brockton
 - Municipality of Kincardine
- Huron County:
 - Municipality of Morris-Turnberry
 - Township of North Huron
 - Township of Howick
 - Township of Ashfield-Colborne-Wawanosh
- Grey County:
 - Municipality of West Grey
- Wellington County:
 - Town of Minto



Vulnerable Populations & Social Programs

The Study identified populations who may be more vulnerable as a result of potential changes to social programs and services:

People of low socio-economic status, including seniors, single parents, children and youth

People experiencing mental health and/or addictions challenges

Victims of domestic violence, specifically women and children

These populations are supported by a local network of social programs, such as:

Bruce Grey Poverty Task Force

Community Safety and Well-Being Plans

Employment Training Programs

Food and Income Assistance Programs

Housing and Shelter

Long Term Care Facilities

Child Care and Early Years Programs

Drug and Alcohol Programs

Mental Health Programs

Child and Family Services



Potential Project Effects

- The Project is not anticipated to result in a significant increase in pressure on vulnerable populations or social programs and services.
- Population growth may increase the cost of living and divide between 'have' and 'have nots'.
- Enhanced community sustainability, multiculturalism and community involvement, with a greater need for culturally appropriate services.
- Potential increased pressure on social programs. However, the municipal tax base and funds for social programs is expected to increase.



Support Options

Options to enhance opportunities or mitigate potential negative effects

Option 1: Create a **Corporate Social Responsibility (CSR) program** that helps to address some of the current pressures being placed on vulnerable populations and social programs/services. The CSR program could include partnership development with local service providers, donations to NGOs/community organizations, funding programs for NGOs/charitable organizations, and scholarships.

Option 2: Create a **Participatory Social Monitoring (PSM) Program** to help collect social monitoring data to support social program planning and NWMO's CSR program.

Option 3: Convert temporary accommodations for workers to subsidized /transitional housing for vulnerable populations following construction.

Option 4: Create a **Child Care Centre in the Centre for Expertise**, and/or leverage existing local space for childcare facilities, with spaces set aside for low-income families.

Participatory Social Monitoring Program

- Program designed to identify Project effects on vulnerable populations and social programs.
- Provides a mechanism to understand and monitor expected or emerging changes in the Study Area.
- Partnership between local and regional service providers, academic/training institutions, South Bruce and the NWMO.
- Social service providers, academic representatives and persons with lived experience guide social monitoring and participate in data collection.
- Program Participants help design the program, such as the scope, groups represented, indicators, etc.

Technical Peer Review

- Recommends additional study to further assess:
 - the potential effects on other vulnerable populations, such as culturally/linguistically diverse groups
 - the conclusion there will be only a small increase in Project-related population growth, thereby not adding significant pressure to existing social programs
 - the conclusion there will be an insignificant increase in the cost of living
- Future studies should incorporate relevant findings and recommendations from other community studies
- Future studies should use suitable analytical frameworks for a systematic and comprehensive assessment of potential Project effects (representative of the community diversity)

What We've Learned

- The studies address following guiding principles:
 - Regional Economic Development Study: #13, #14, #10, #21, #22, #36.
 - Emergency Services Study: #10, #28 and #32.
 - Vulnerable Populations and Social Programs Studies: #10, #28, #32
- South Bruce and County will require additional emergency response capability
- While the Project is not anticipated to result in a significant increase in pressure on vulnerable populations or social programs and services, there are opportunities to increase support for social programs, such as Participatory Social Monitoring.
- South Bruce has limited economic capacity to take advantage of the Project. An Economic Development Collaborative would allow the Core Study Area municipalities to be more competitive.

Questions?

